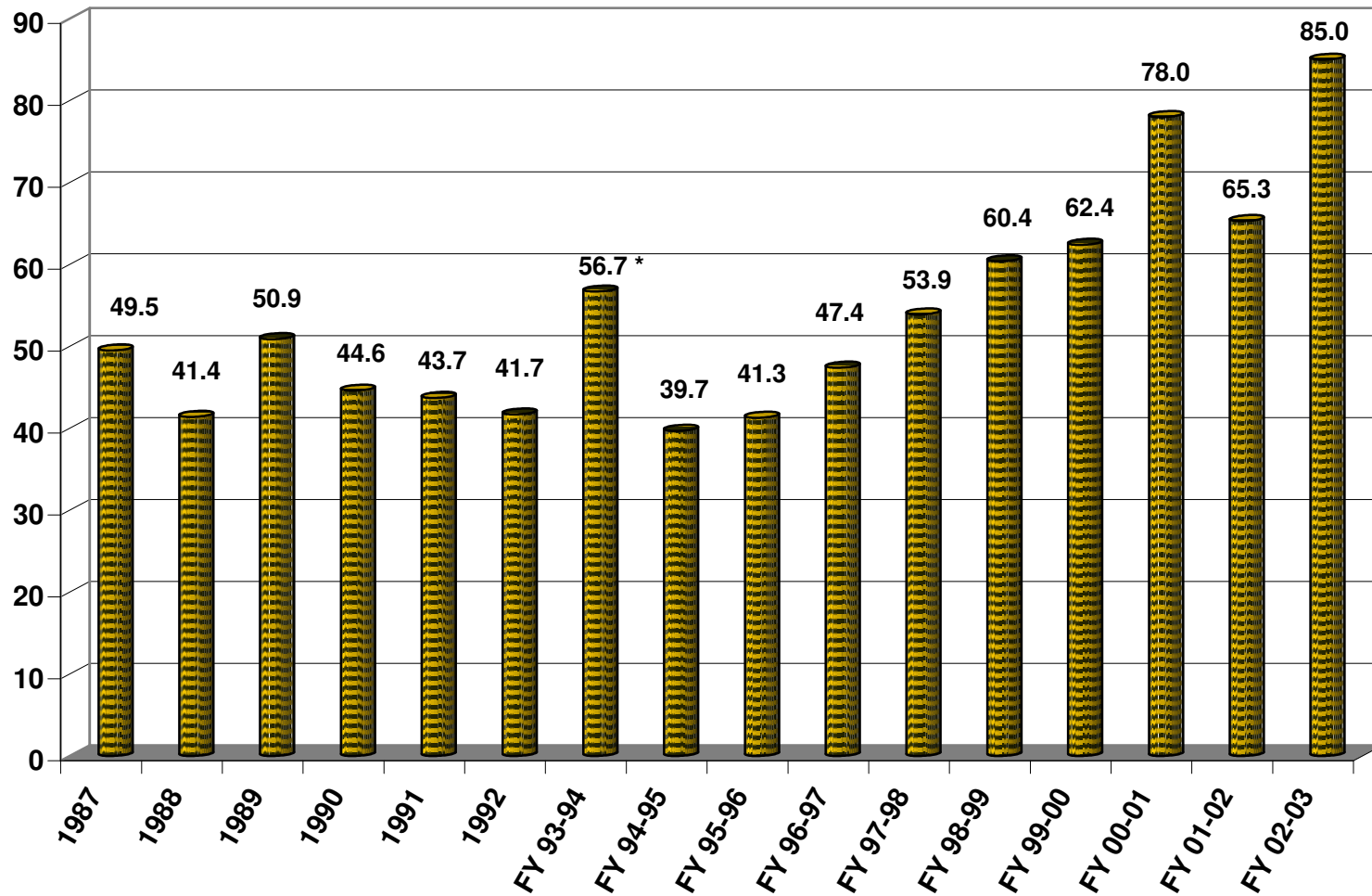




Reported Planned Parenthood National Office Revenue 1987 - June 2003 (All Amounts in Millions of Dollars)



Source: Planned Parenthood Federation of America Annual Reports 1987 through 2002/2003.

* After 1992, PPFA switched to a fiscal year ending on June 30th. Data for FY 93-94 covers an 18 - month transitional period.

From the 95/96 Annual Report onward, PPFA listed eliminations between the national office and affiliates. No adjustments have been made above to the amounts listed by PPFA as total national office income on the Annual Reports.